

## Technical Note

### ***Removing existing USB Device Drivers and installing Common Model Drivers***

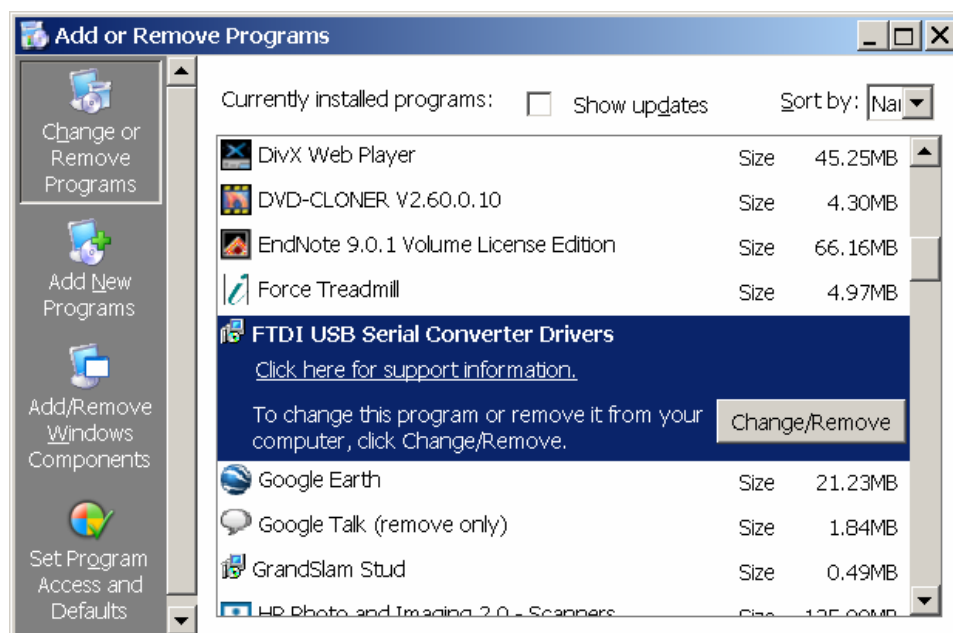
Most Recent Revision Date: 25 October 2006

Operating System: Windows 2000 or XP

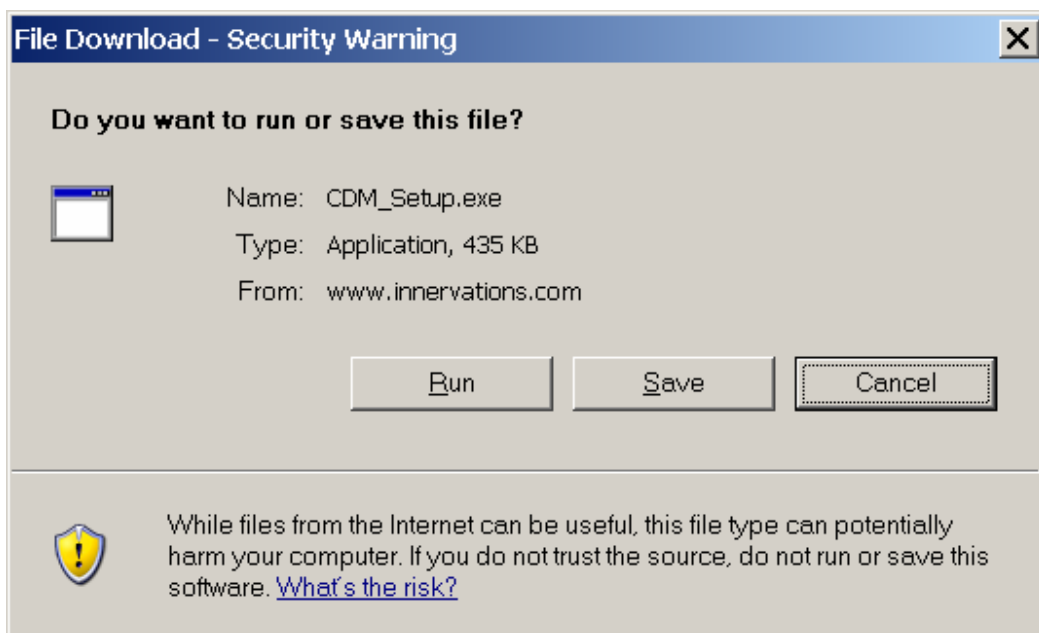
**Problem:** Three different USB interface units have been developed for the various Innervations products. These are the XPV4, XPV6, XPV6+ and XPV7 and are used in various combinations with the KMS, BMS, and Force Treadmill software systems. This has created inconvenience for clients with more than one system. For example, many of our clients have a Performance Force plate which includes the XPV7 interface as well as a standard BMS which uses the XPV6 interface. To use both systems with the one computer required removing the existing driver and then installing the driver for the other interface. The manufacturer of the USB interface chip have now released a common driver for both which makes using different Innervations systems on the same computer seamless.

**Process:** Remove existing driver and install CDM driver

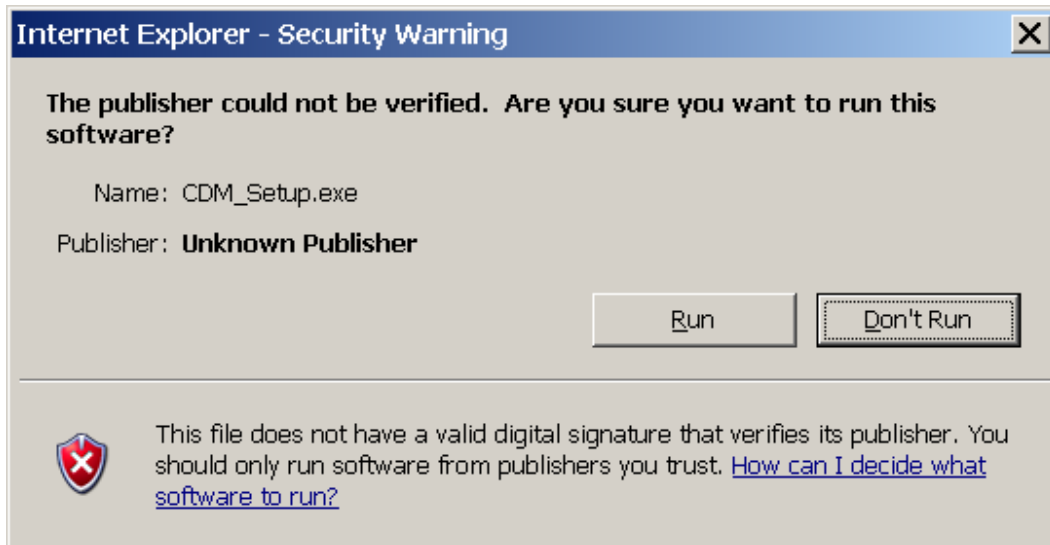
1. Turn on your computer and wait until Windows finishes loading.
2. Select **Start, Control Panel, Add or Remove Programs**
3. Select the FTDI Drivers and click Change/Remove. You should be prompted to remove the drivers.



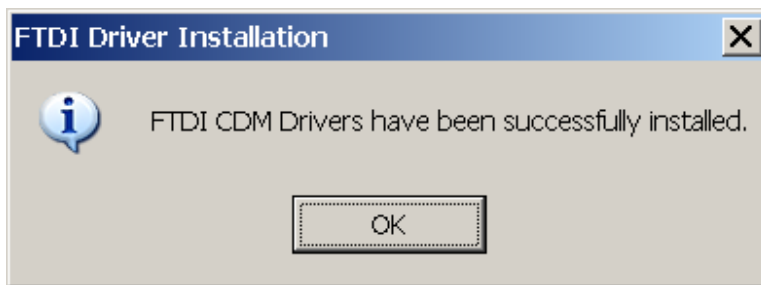
4. To install the CDM Driver use your web browser to open the webpage [www.innervations.com/download.htm](http://www.innervations.com/download.htm) and follow the instructions to download the CDM Driver.
5. If the driver is to be installed on the computer displaying the website select **Run** and the program will download and install the driver. If the driver is to be installed on another computer select **Save** and copy to the target computer.



6. The following window will appear. Click **Run**.



7. The following window will appear. Click **OK**.



The USB-Serial driver software should now be installed. Run the KMS or BMS software and the program should find the XPV6 Data Interface Unit.

*Please Note: With all releases of KMS, BMS and Force software from October 2006 the CDM driver will be included with the software and automatically installed with the application.*