

## Technical Note

Downloading and Installing Device Drivers for USB-Serial Interface for XPV6 Data Interface Unit – Internet Version

Most Recent Revision Date: 9 October 2003

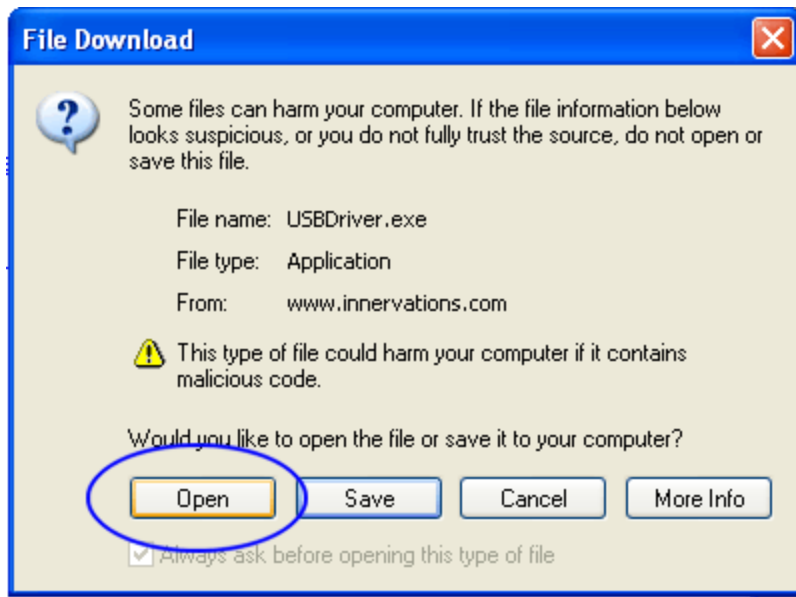
Windows XP

1. If you have not already done so, turn on your computer and wait until Windows finishes loading.
2. Open your web browser (e.g. Internet Explorer) and go to the address <http://www.innervations.com/usbdriverdownload.htm>

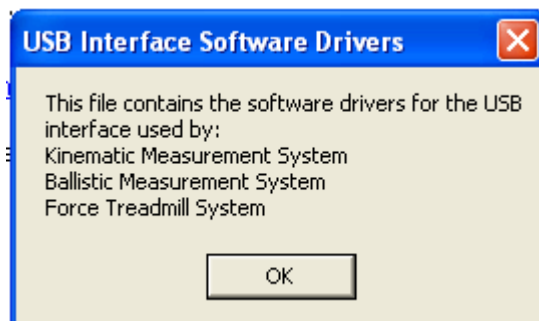


The screenshot shows the website for Innervations, featuring a navigation menu on the left with links like 'home', 'about us', 'products', 'downloads', 'administrations', 'contents', 'search', 'feedback', 'contact info', 'request info', 'what's new', and 'currency converter'. The main content area has a header with a large 'K' logo and the text 'False signal processing'. Below this is a navigation bar with links: 'home', 'products', 'downloads', 'search', 'contact info', and 'educational resources'. A sub-header reads 'A New Information Page: [Balance, strength, rehabilitation and training using the Kinematic Measurement System](#)'. The main heading is 'USB Software Drivers' followed by 'Download and Install'. The text explains that the Kinematic Measurement System, Ballistic Measurement System, and Force Treadmill System require USB driver software. A link is provided: 'A technical note explaining the procedure for downloading and installing the USB drivers is provided [here](#).' Below this, it states 'It is provided as an Adobe Acrobat file. If you do not have the Acrobat Reader then click here to download this free product' with a 'Get Acrobat Reader' button. A blue oval highlights the text 'To begin the installation procedure - [CLICK HERE](#)'. At the bottom, there is a 'Back to Download Page' link and a copyright notice: 'Copyright Innervations 2003. All rights reserved. Last updated Thursday, October 09, 2003'.

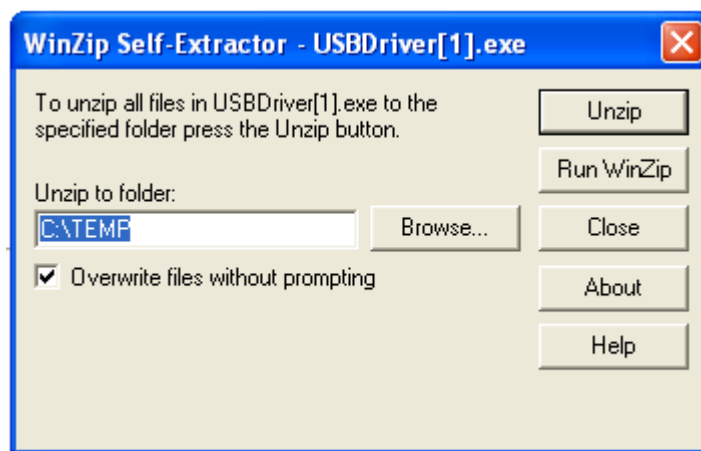
3. Click on the text indicated above
4. Click on the **Open** button as indicated in the following picture.



5. Click the **OK** button.



6. Select an appropriate folder to place the driver files in. We suggest C:\TEMP. Then click the **Unzip** button.

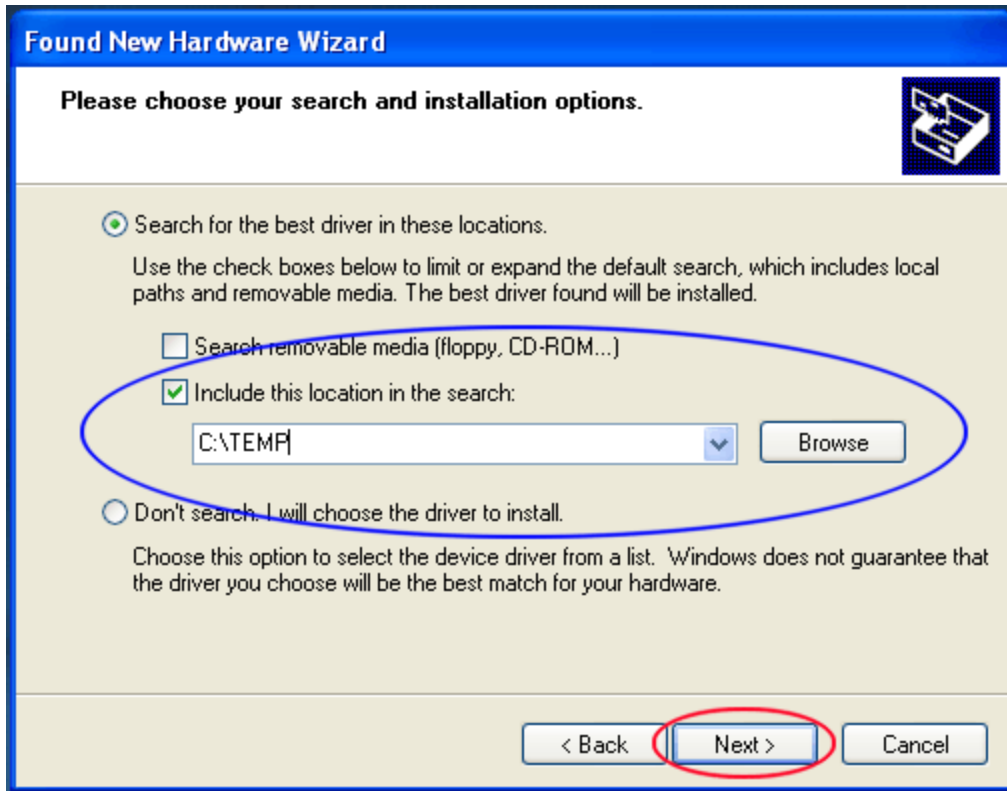


7. Click the **Close** button.

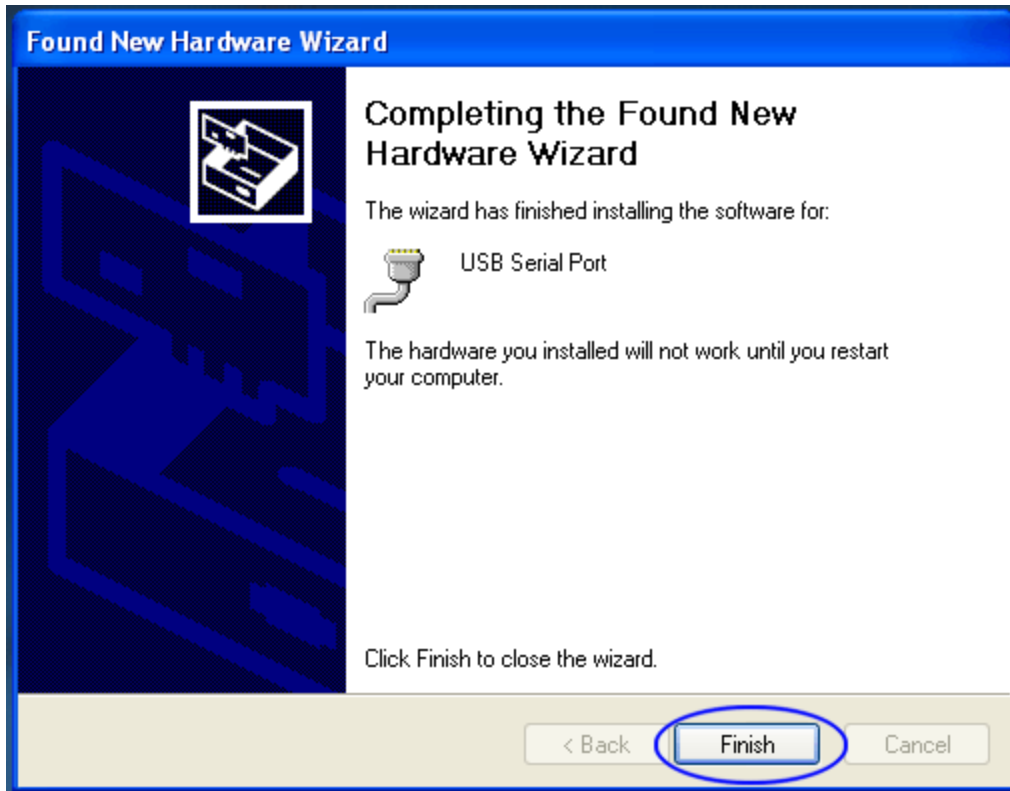
8. Plug the XPV6 into a spare USB port
9. The **Found New Hardware Wizard** should appear



10. Select **Install from a list or specific location (Advanced)** and click **Next**



11. Select **Search for the best driver in these locations**
12. Check **Include this location in the search**
13. Click **Browse** and select the location of the USB Serial Chip drivers. If you went with the default location this will be C:\TEMP otherwise browse to the folder where you unzipped the driver files into. Then click **Next**.



14. WAIT while Windows installs the driver software. The following window will appear. Click ***Finish***.

The USB-Serial driver software should now be installed. Run the KMS or BMS software and the program should find the XP Data Interface Unit.