

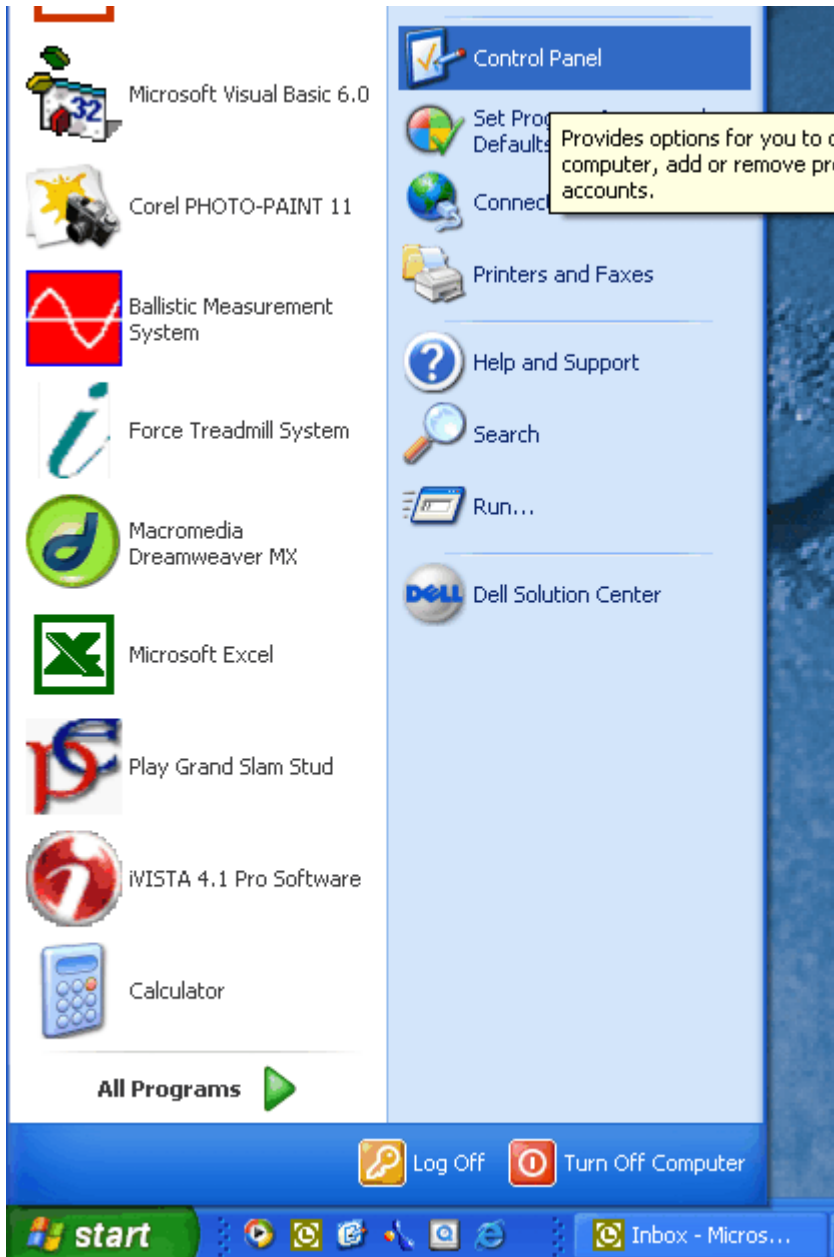
Technical Note

Determining the COMMS Port assigned to the XPV6 Data Interface Unit

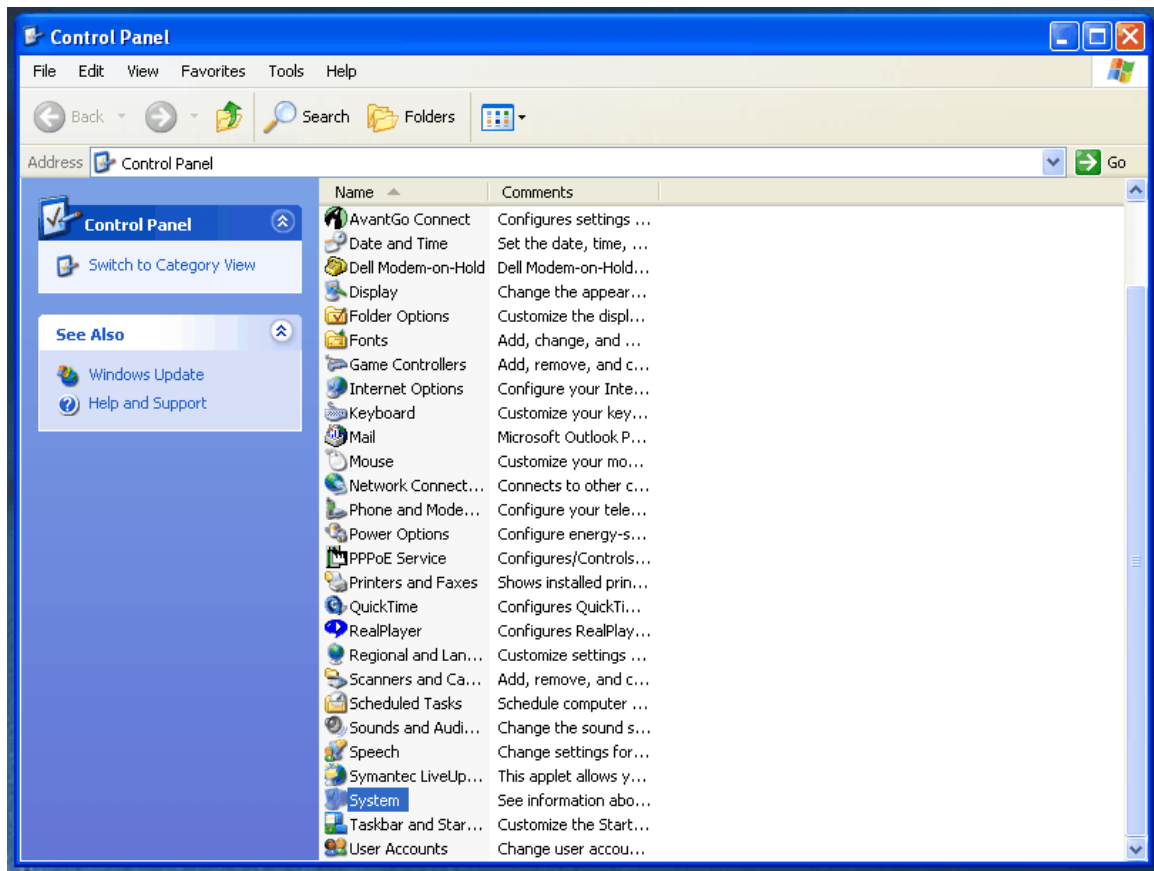
Most Recent Revision Date: 9 September 2003

Windows XP

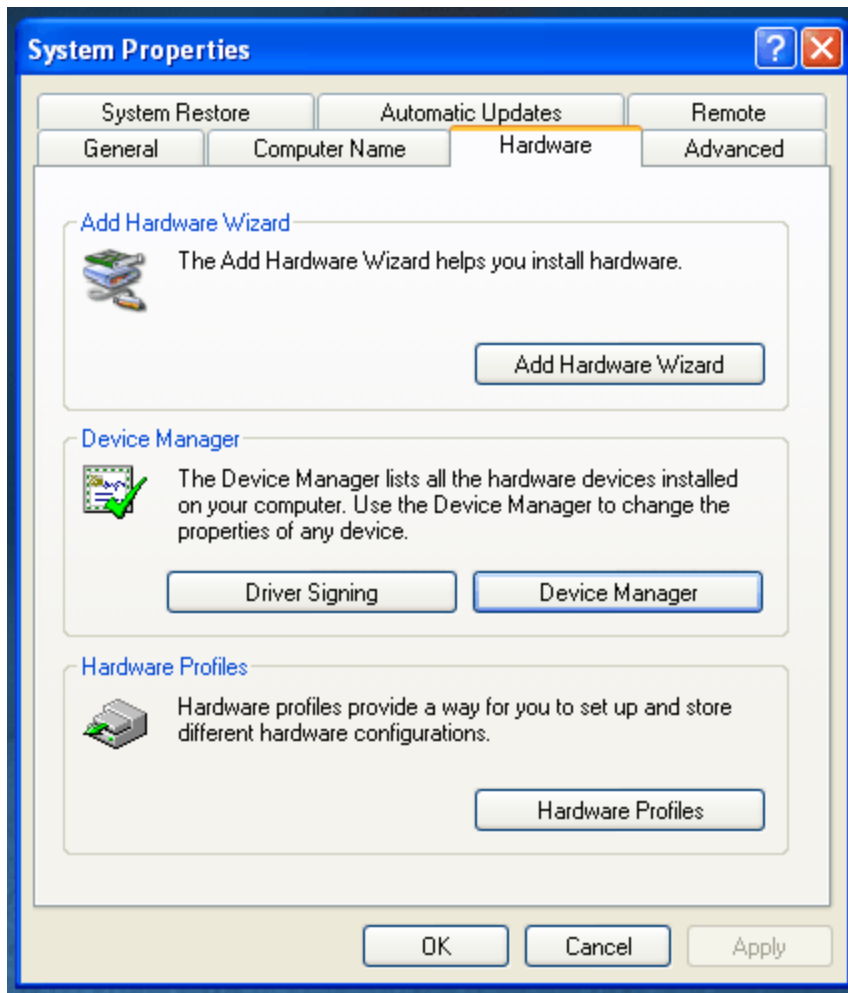
1. Click the “start” button and select **Control Panel**.



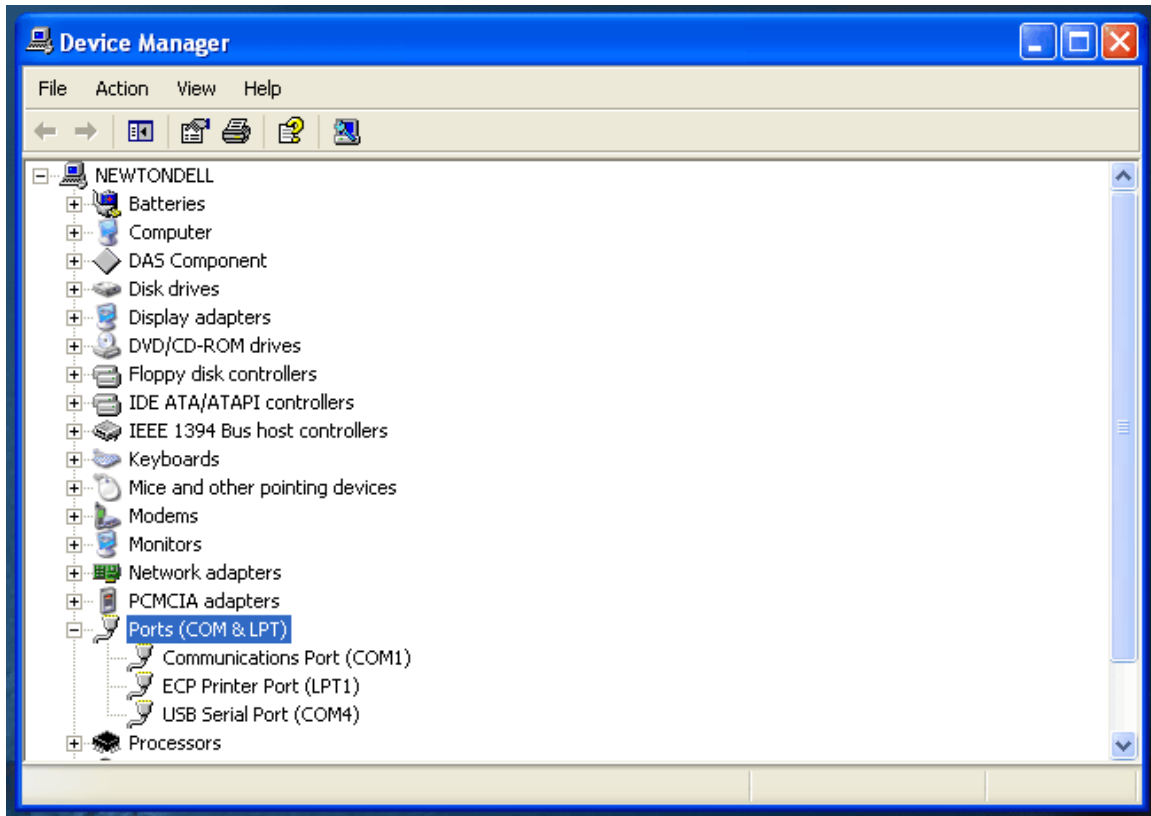
2. Select **System**



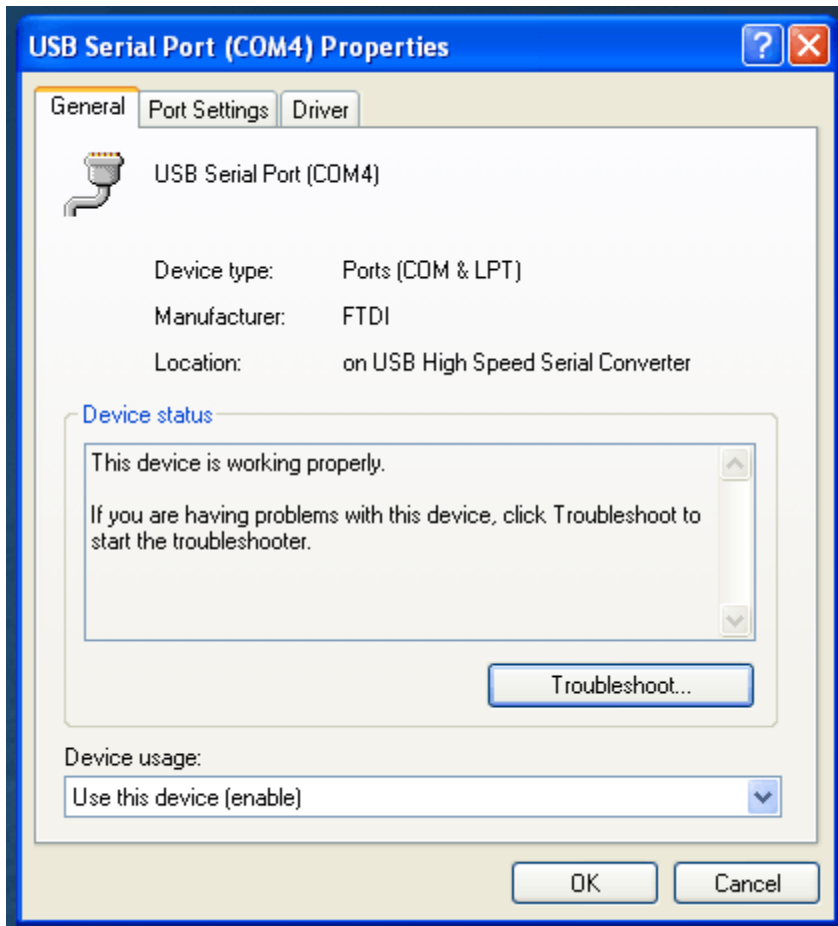
3. Click on the **Hardware** tab.



4. Click the **Device Manager** button.



5. If the USB-Serial device driver has been correctly installed and the XPV6 hardware found "USB Serial Port (COMx)" should be listed under Ports (COM & LPT) with "x" being the communications port number assigned to the device.
6. Double-click on the item **USB Serial Port (COMx)** to view the properties.



7. The **Device Status** should state that the device is working properly. The COM port assigned (in this example COM4) is used when setting up the Ballistic Measurement System or Kinematic Measurement System.