

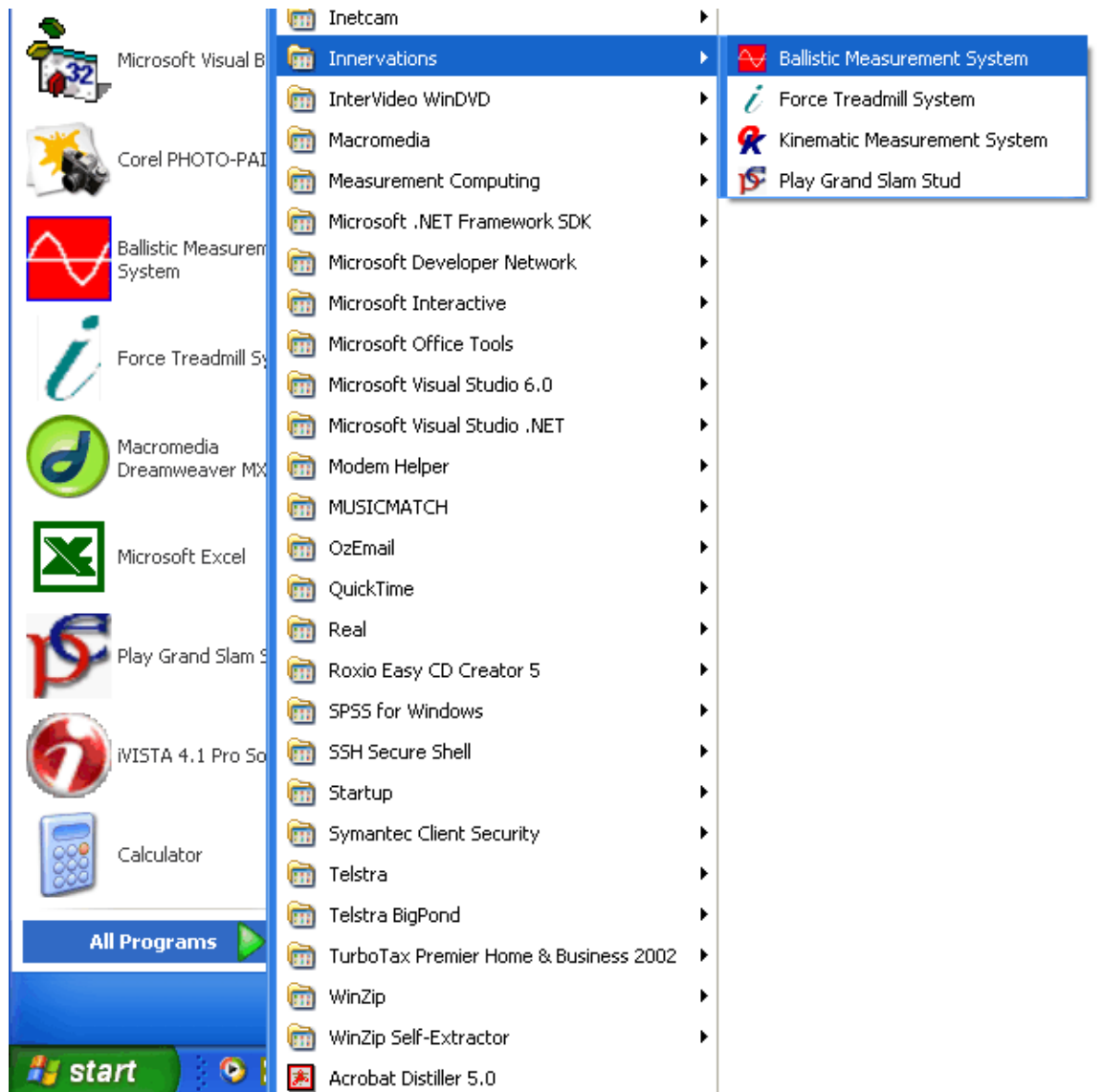
Technical Note

Configuring the BMS software for the XPV6 Interface

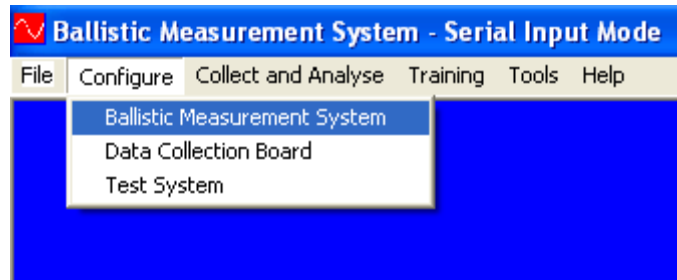
Most Recent Revision Date: 9 September 2003

Windows XP

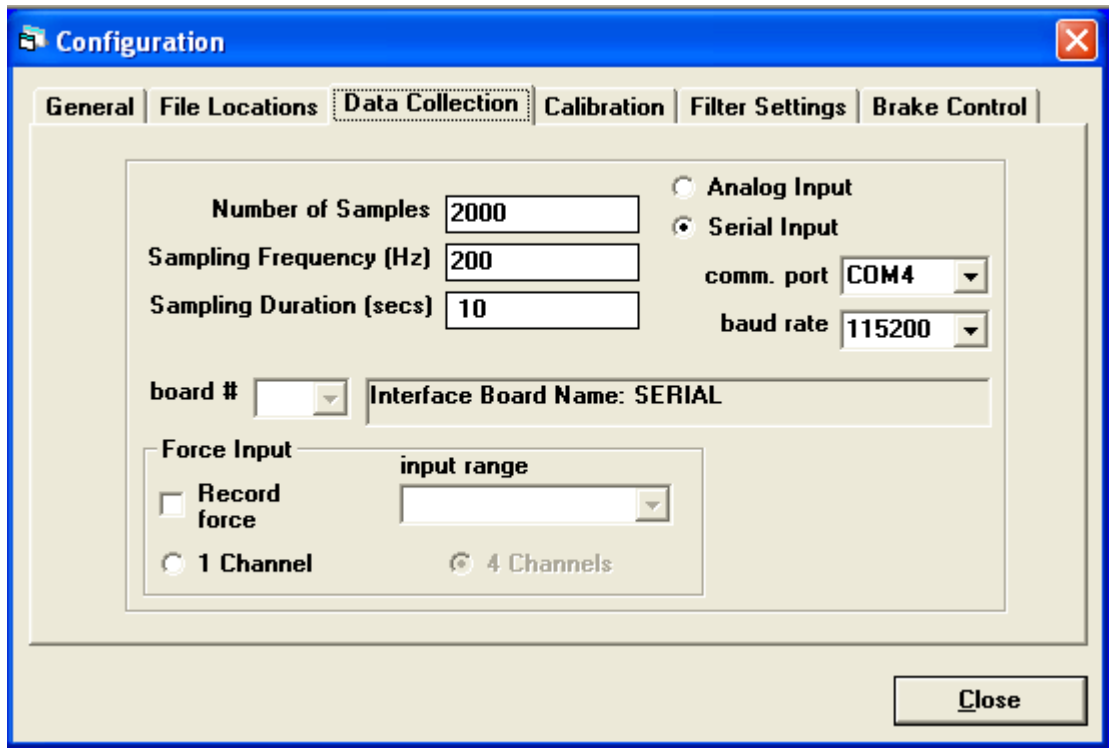
1. To run the Ballistic Measurement System software Click the “start” button and select **All Programs** then **Innervations** then **Ballistic Measurement System**.



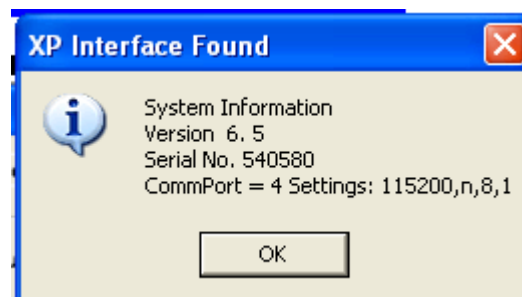
2. Once the BMS software has started select **Configure** and then **Ballistic Measurement System**.

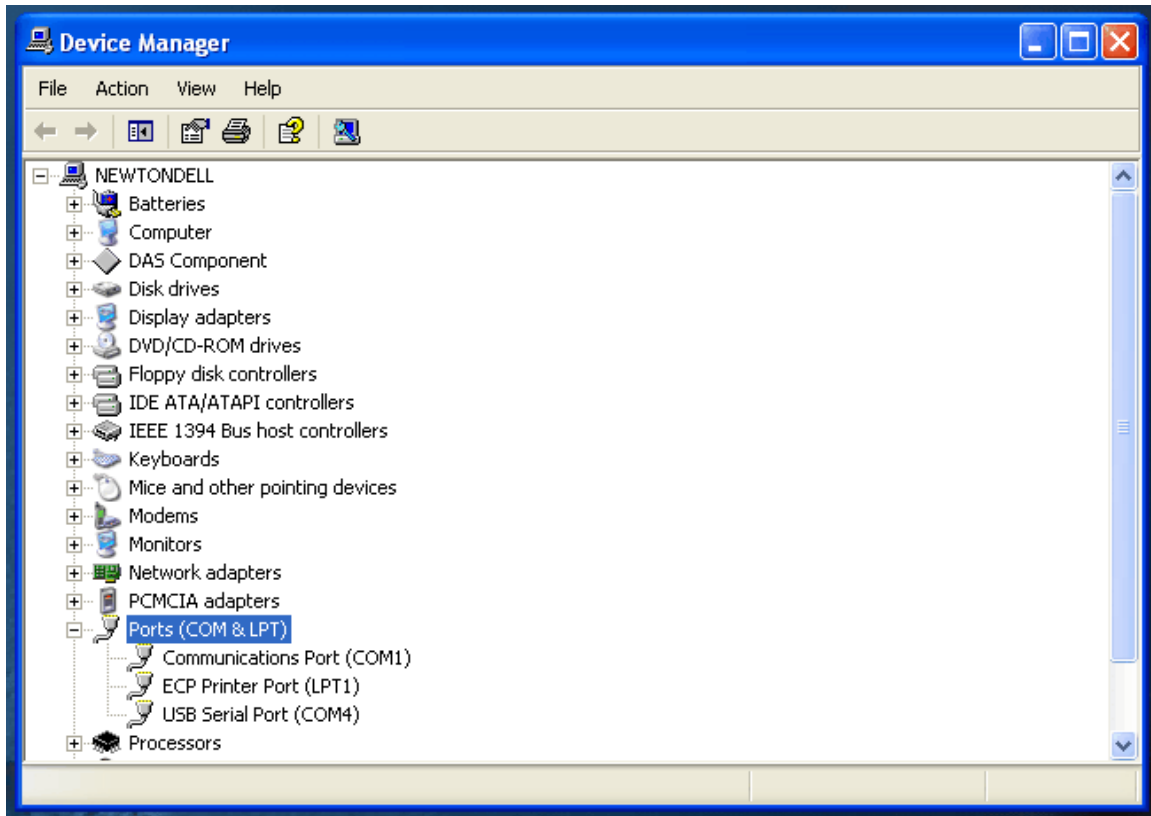


3. Click on the **Data Collection** tab.

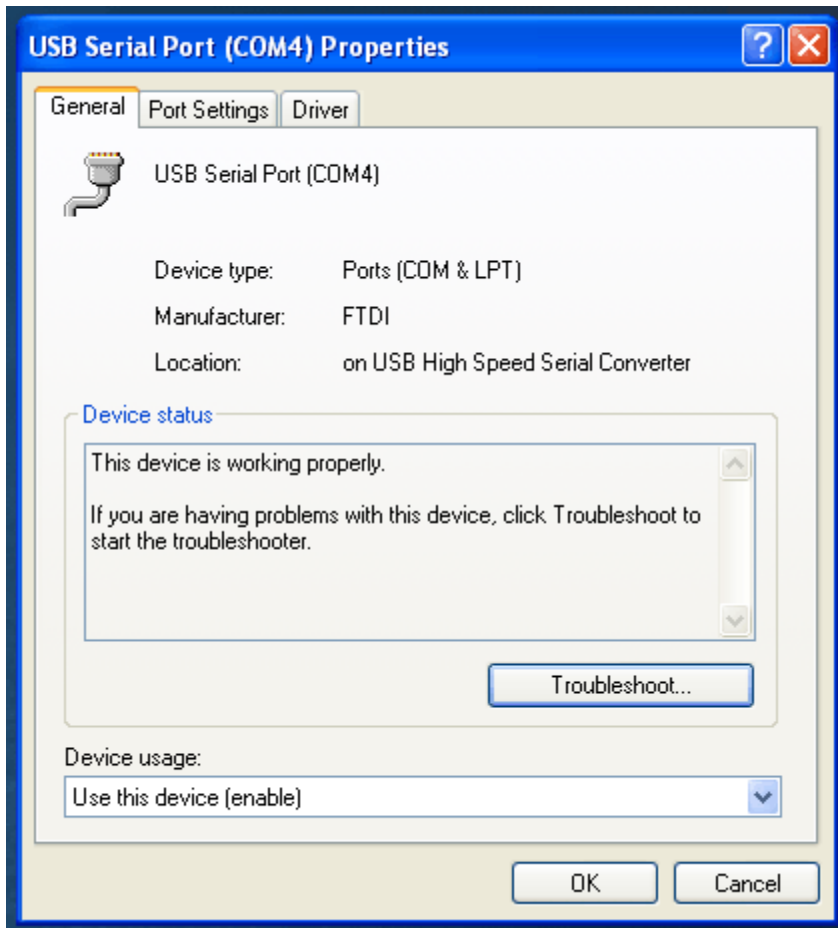


4. Click the **Serial Input** option. Select the COM port assigned e.g. COM4. Set the Baud rate to 115200.
5. Click the **Close** button, select **File** then **Exit**.
6. Run the BMS program again.
7. BMS should find the XPV6 unit and display the serial number and firmware version.





8. If the USB-Serial device driver has been correctly installed and the XPV6 hardware found "USB Serial Port (COMx)" should be listed under Ports (COM & LPT) with "x" being the communications port number assigned to the device.
9. Double-click on the item **USB Serial Port (COMx)** to view the properties.



10. The **Device Status** should state that the device is working properly. The COM port assigned (in this example COM4) is used when setting up the Ballistic Measurement System or Kinematic Measurement System.